

Published by The Orchid Club of South Australia  
Inc.

SOUTH AUSTRALIAN  
**ORCHID**  
**BULLETIN**  
**MAY 2023**



**Plant of Open Division and Registrar's Choice**  
***Cattlianthe Browniae* 'Riga'**



**Grown by Les Nesbit**

## ORCHID CLUB OF SOUTH AUSTRALIA LIFE MEMBERS

1966	Neil Christoph†	1997	Eric Furness†
1970	H C England†	1998	Cyril Clifford†
1974	Bernie Hansen†	1999	Don Nesbitt†
1975	Rex Thompson†	2001	Sally White
1975	Syd Monkhouse	2002	Richard Fishlock
1976	John Lewis	2003	Bob Collins†
1978	Mick Chenoweth†	2007	Reg Faulkner†
1979	Merv Strout†	2007	Pat Faulkner
1980	Colin Jennings†	2007	Peter Hills†
1984	Merv Donhardt†	2007	Coralie Hills
1985	Russell Schultz†	2007	Judy Penny†
1985	Harry Lambert	2008	David Harmer
1985	John Harris	2008	Pat Harmer
1985	Kath Harris†	2009`	Russell Job†`
1985	Barbara Clayton†	2009	Edda Viskic†
1985	Lorraine Cottle	2010	Gordon Hewitt†
1985	Myrnie Jennings	2012	Murray Baulderstone†
1986	Nick Packard†	2012	Leo Micenko†
1987	Margaret Hewitt†	2014	John Gay
1987	Shirley Monkhouse†	2014	Bev Gay
1988	Don Gallagher	2014	Iain Kilpatrick†
1988	Kel Staples†	2015	Ron Yates
1990	Allan Sullivan†	2016	Graham Hein
1992	Bill White†	2017	Lesley Fenton
1992	Roy Hargreaves†	2017	John Lampard
1994	Reg Shooter†	2019	Trevor Camac
1994	Enid Brooking†	2021	Trevor Garard
1996	Ted Chance†	2021	Les Nesbitt
1996	Marjorie Chance†	2023	Wendy Lodge

† Denotes Deceased

**Editors Contact for Copy:** Danielle Mazurkiewicz

Email: [editor@ocsa.org.au](mailto:editor@ocsa.org.au); Phone: 0433 016 673

The opinions expressed by authors do not necessarily reflect the views of the Editor or the Committee of The Orchid Club of South Australia Inc.

Digital images by Marianne Carter

**COPYRIGHT:** All contributions to this Bulletin, which have acknowledged authors are automatically covered by copyright. We believe that most authors would be willing to allow free use of articles if written approval is sought from them through the Secretary

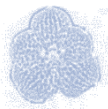
**The Official Bulletin of The Orchid Club of S.A. Inc.**  
**Patron: Mr. Rod Bunten**

**Management Committee Members**

<p><b><u>President</u></b>  Coralie Hills  124/6 Price Street,  Melrose Park, SA 5039  Ph. 0414 522 675  <a href="mailto:president@ocsa.org.au">president@ocsa.org.au</a></p> <p><b><u>Show Marshall</u></b>  Des Bettcher  Ph. 0466 797 485</p> <p><b><u>Editor</u></b>  Danielle Mazurkiewicz  Ph. 0433 016 673  <a href="mailto:editor@ocsa.org.au">editor@ocsa.org.au</a></p>	<p><b><u>Secretary</u></b>  Michael Gray  <a href="mailto:secretary@ocsa.org.au">secretary@ocsa.org.au</a>  GPO Box 730  Adelaide, S.A. 5001  Ph. 0490 033 905</p> <p><b><u>Registrar of Judges</u></b>  Wendy Lodge  Ph. 0421 495 630</p> <p><b><u>Asst. Registrar of Judges</u></b>  Rayne Riggs  Ph. (08) 8280 9165</p> <p><b><u>Education &amp; Publicity</u></b>  Trevor Garard  Ph. 0414 807 634</p>	<p><b><u>Hon Treasurer</u></b>  Graham Hein  13 Underwood Close  Golden Grove SA 5125  Ph: 0488 788 700  <a href="mailto:treasurer@ocsa.org.au">treasurer@ocsa.org.au</a></p> <p><b><u>Past President</u></b>  Des Bettcher</p> <p><b><u>Committee Members</u></b>  Sharon Farley  Ph. 0409 118 348  Andrew De Cicco  Ph. 0439 683 706  Carmel Edwards  Ph. 0434 084 313</p>
<p><b><u>Day Group Coordinator:</u></b> Alan Jabs – Ph: 0417 779 883</p>		

**CONTENTS**

Life Members	2	Guest Speaker Day Meeting	7
Management Committee	3	Guest Speaker Night Meeting	7
President's Word	4	Day Group Report April	7
Subscriptions due	5	From the Registrar for April	9
May Neutrog orders	6	Floral Results April	11
New Members	6	Orchid Habits of Mount Kinabalu	13
Beginner's Group April	6	Program Details	20



## PRESIDENT'S WORD MAY

Here we are in May and the cooler damper weather has arrived. It should be a time of looking for spikes but please be careful as they will be very brittle at this stage and very easy to knock off. There is no repair job that I know of to put them back together. But it's an exciting time of the year as we go through our collections in anticipation of what is to come.

By the time you receive this Bulletin, the Festival of Flowers will be over and of course this was our Autumn Show. I wish to thank all those that worked so hard for the Club and the Festival. I do hope that you had a great time and that you not only enjoyed yourselves and had a chance to make new friends as you mixed with the other garden groups. Now you have got into the swing of things, don't forget to start preparing for the Winter Show which will be on 8 July at a new venue, The Klemzig Community Centre.

Our April Night meeting fell on the Thursday before Easter which meant that the numbers were lower, but we had a great time. Graham Hein showed us how he prepares his plants for showing, so not only can they be transported to the Show but so that they can be presented for the Judges and public in the best possible way.

The Day Meeting was another great event when Alan Jabs had prepared an interesting presentation on Virus and Fungal Diseases, things we hear about, but to see what they look like and the different suggestions to keep our collections free of these things was a great reminder.

At our May Night meeting Graham Hein is going to speak about Zygotetalums. A genus that has grown in popularity and can be grown by everyone. Graham has had great success with growing this genus and will share with us how he goes about it. The Day meeting is going to have a talk on Jewel Orchids. Ron Parish is having great success with these, and he will bring along some plants and tell you how he grows these orchids which are an indoor plant.

I look forward to seeing you all as we share a cuppa after the meeting and discuss what we have seen and heard.

*Coralie Hills FAOC, President and Life Member - Orchid Club of SA Inc.*



## SUBSCRIPTIONS FOR 2023 ARE NOW DUE



As of the 1<sup>st</sup> of January, your membership fees for 2023 are due; costs are as follows:

For members who wish to continue receiving the Bulletin by post the fees remain at:  
Single: \$35:00 Joint/Family: \$40:00

For members who wish to continue receiving the Bulletin by email or those members who want to change to receiving the Bulletin by email, the fees will be:

Single: \$25:00 Joint/Family: \$30:00

Members who wish to change from receiving the magazine by post to receiving it by email, I will need your email address.

Payment may be made at the Treasurer's Desk at the next Monthly Meeting or to the Assistant Treasurer at the next Day Group meeting.

You may also pay by post to:

Orchid Club of South Australia  
GPO Box 730  
ADELAIDE, SA 5001

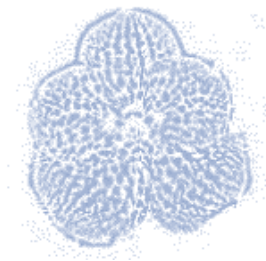
Alternatively, they can be paid by Direct Debit to:

Orchid Club of South Aust.  
BSB No: 105 152  
Account No: 032766440

**BE SURE** to put in the "Comments" field your name and 2023 subs.

The Treasurer will also accept membership renewals by Credit Card. **PLEASE** consider this method of payment.

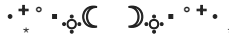
Thanking you.  
*Graham Hein – Treasurer*



## MAY NEUTROG ORDER

The next Neutrog product order has been advised to members who have opted to create the Neutrog online process so this is just a reminder to those members that the Neutrog Online Store is now open and will close at COB on Monday the 4<sup>th</sup> of May 2023. Collection of orders will be between 8am and 12 noon on Friday the 19<sup>th</sup> of May at Carrick Hill and the Kanmantoo factory; and Saturday the 20<sup>th</sup> of May at the Vellex Transport depot 101-109 Ryans Road, Parafield Gardens, or the Wallis Drive-in Noarlunga. For those members who have not set-up their online ordering process and would like to do so, contact me on [treasurer@ocsa.org.au](mailto:treasurer@ocsa.org.au) and I will arrange with Neutrog to send you another “welcome to online ordering” email.

*Graham Hein, Treasurer*

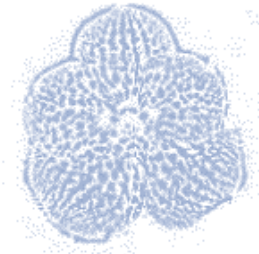
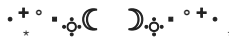


## WELCOME NEW MEMBERS



The president and committee, on behalf of the members, welcome the following new members to the club. We trust that your time with us is beneficial and rewarding to you in your hobby. Your State Show Number and Division Id are printed in **BOLD** details below.

<u>NAME</u>	<u>NUMBER</u>	<u>DIVISION</u>
Peter Wibberley	<b>333</b>	<b>2<sup>nd</sup></b>



## **BEGINNER'S GROUP**

The Beginner's Group will commence again this month so come along to the May Monthly Meeting and be a part of the group from 7:15pm to 7:45pm. There will be expert club growers to help new and older members in the art of growing and cultivating orchids so come along early to increase your knowledge.



## **GUEST SPEAKER MAY NIGHT MEETING**

The next night meeting will be held at the Enfield Community Centre, 540 Regency Road, Enfield on Thursday the 4<sup>th</sup> of May commencing at 8pm. The guest speaker for this month is the honorary treasurer of the club Graham Hein and his topic will be growing the genus *Zygopetalum*. Graham has been growing this group of orchids for many years, telling me that he received his first Zygo more than 30 years ago, and still has a piece of the original *Z. maculatum* (originally named *Z. mackayi*). He now has a collection of several *Zygopetalums* as well as the intergeneric forms. He will enlighten us on how he grows this genus so, come and find out what you need to do with your plants.

## **GUEST SPEAKER MAY DAY GROUP MEETING**

The May Day Group meeting will be held at the Enfield Community Centre, 540 Regency Road, Enfield on Friday the 12<sup>th</sup> of May from 2pm to 4pm. Long time and expert grower, Ron Parish will be the guest speaker for this meeting, talking about the Jewel orchids. This orchid is known for its attractive foliage, not the flowers so much. Ron and Irene predominately grow species orchids and this genus is one of his specialities, so this is your chance to find out from the expert on how to grow them and see if you are game to give them a try; a meeting not to be missed.



## **FRIDAY GROUP REPORT– APRIL**

This month there was two significant milestones reached.

The first was that we achieved fifty members attend a Friday meeting. This thrills me no end that what happens each month is of interest to all of you and ultimately spurs us on to bigger and better. So, a huge thankyou to each and every one for continued support.

Second that it is now 12 months since the committee took the leap of faith in Carol and I to help out with the Friday Group which is a lot of fun to be a part of and a great learning experience for not only us but hopefully all who come along each month.

The presentation this month was Virus 101 which I must admit took several months to research, proof and write. Sitting at the front with laptop and projector, looking out, faces to the back of the room all focused on the screen and together we travelled the journey of slides. Ron and Elizabeth gave forth their very credentialed wisdom adding to the interactive style of the presentation, including tips and bits of information based on personal experiences with their collection. I noted many taking notes too...

My presentation notes are now available on the OCSA Orchid Forum face book site as a downloadable PDF which includes extra images not shown during the presentation.

Many thanks for all the raffle table offerings brought in by many. It is warming to see this every month as it value adds to our gathering, and I urge all to keep supporting this.

Winner of the plant of the month for April was a difficult choice but went to Rayne with her *Dendrochilum uncatum*. Well done, Rayne.

Next month:

Thursday night - May 4<sup>th</sup> Graham Hein – *Zygopetalums*

Friday Group - May 12<sup>th</sup>... Ron Parish – Jewel Orchids

And just like that we look toward the next 12 months with eager anticipation.

See you all next month!

*Alan Jabs*





## FROM THE REGISTRAR FOR APRIL

### FROM THE REGISTRAR FOR APRIL

#### **Plant of Open Division and Registrar's Choice**

The Judges doing Open Division chose *Cattlianthe* Browniae 'Riga' grown by Les Nesbit as plant of the Division. The very popular 'Cattleya type' orchid is colourful and easily grown in the Adelaide area. As Autumn progresses, we should see more of these types of orchids. The crossing of *Cattleya harrisoniana* with *Guarianthe bowringiana* was made in 1904, making it a primary hybrid. This crossing has been awarded with a High Class Certificate and an Award of Cultural Commendation in 1997. These orchids like high humidity, plenty of water in the warm weather and lots of sunlight.

Les grows his plant cool, in a shade house with 50% shade cloth and up to 75% during summer. He waters every 2-3 days in the summer, and only when there is no rain in winter. Neutrog fertilizers like Liquid Strike Back for Orchids are used fortnightly, and the plant is growing in medium bark. His main comments are that it is very easy to grow and a very reliable flowering orchid. Divisions of these sell like hot cakes, and it is one of his favourite plants.

#### **Plant of First Division**

First Division Judges chose *Cattleya* Clark Herman 'Carl' grown by Brian Coombe as plant of Division. They described it as a well grown *Cattleya*, with 2 nice spikes, one being slightly better than the other. It had good shaped flowers of a nice even size. The plant was well staked for presentation and the leaves were nice and clean. This crossing was registered in 1972.



Brian informs us that he grows this plant cool in a cold glasshouse which gets misting during the summer months with under bench sprays. He also waters 2-3 times a week in the summer and only occasionally during winter, Brian likes to use slow-release fertilizer as well as Horticultural Solutions and the plant is growing in medium bark.

#### **Plant of Second Division**

The Judges of Second division chose *Rhyncholaeliocattleya* Tribute 'Indendence Day' as plant of the Division. The plant is a crossing of *Rlc*. Memoria Crispin Rosales and *C*. Horace, which was made in 1979. This impressive flowering plant was grown by Carol and Alan Jabs. This hybrid represents



the breeding back in the 1970-1980's using *Cattleya* Horace, which is a parent in many awarded complex *Cattleya*'s. Both the parent plants have received 3 awards.

Tonight's plant is a well grown presentation, with 2 large maroon/purple flowers which normally do not flower at this time of year, usually around Winter/Spring (showing climate change perhaps). Nicely flowered Carol.

According to Carol, her plant is cool grown in a shaded green house (that is covered with extra shade cloth in the summer. The plant is growing in a mixture of Perlite, bark and expanded clay balls. She waters as required, allowing the plant to dry out between watering, fertilizing weekly during growing season then fortnightly for the rest of the year using Neutrog Liquid Strike Back for Orchids.

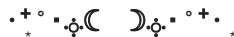


### **Plant of Orchids in Schools Division**

Judges doing OIS Division chose *Laeliacattleya* Tropical Pointer 'Cheetah' that had two lovely presented flowers that had spots around the sepals and petals and with a purple contrasting labellum. The plant is growing in back and it really showed how the rhizome creeps across the top of the mixture in the pots and how

the aerial roots love hanging over the outside of the pot. The flowers when they first open are light pink and they then get darker as the flower ages. This hybrid as received 22 awards through the years since it was registered in 1981. The plant comes from the students of Willunga Primary School.

Trevor Garard informs us that the students grow the plant cool, they water every 3 days during hot weather then the plant only receives natural rainfall. It gets fertilized weekly and the students find it is an easy plant to grow, and say it is a great addition to any plant collection.



### **ATTENTION MEMBERS**

The Club have available to buy from Wendy Lodge, bags of *so called* orchid mix, mainly composed of potting mix with some bark added. This is useful for any potting of begonias, ferns, even vegetable gardens. Not recommended for succulents or cacti and **definitely not** for Orchids, as the mix stays too damp for too long, leading to the rotting of roots. The bags are 25Litre and the cost of \$10. Wendy is putting up a new shade house and the stack of bags needs to be moved. Call her on 0421 495 630 if you are interested in purchasing some.

# APRIL MONTHLY FLORAL RESULTS

## BEST ORCHID OPEN DIVISION AND REGISTRAR'S CHOICE

*Cattlianthe* Browniae 'Riga' grown by Les Nesbit

## BEST ORCHID FIRST DIVISION

*Cattleya* Clark Herman 'Carl' grown by Brian Coombe

## BEST ORCHID SECOND DIVISION

*Ryncholaeliocattleya* Tribute 'Independence Day' grown by Carol & Alan Jabs

## BEST ORCHID IN SCHOOLS DIVISION

*Cattleya* Tropical Pointer 'Cheetah' grown by Willunga High School

## OPEN DIVISION

### **Australian Native Terrestrial - Species**

1. *Ptst. truncata* Les Nesbitt
2. *Erio. cucullatus* Les Nesbitt

### **Laeliinae – Hybrid under 100mm**

1. *C.* (Perception x caudebec) Ron & Irene Parish
2. *C.* (Monte Elegante x caudebec) Ron & Irene Parish

### **Laeliinae – Cluster**

1. *Ctt.* Browniae 'Riga' Les Nesbitt

## FIRST DIVISION

### **Australian Native Epiphyte - Species**

1. *Den. bigibbum* var. *compactum* Brian Coombe

### **Laeliinae – Hybrid 100mm and Over**

1. *C.* Clark Herman 'Carl' Brian Coombe
2. *C.* Dalaginding Wendy & Michael Lodge

### **Laeliinae – Cluster**

1. *Ctt.* Meadii Wendy & Michael Lodge
2. *Ctt.* Valentine Day 'Osborne' Graham Hein
3. *Ctt.* Meadii x *C. amethystoglossa* Rosemary Phillips

### **Oncidiinae - Hybrid under 60mm**

1. *Onc.* Sharry Baby 'Sweet Fragrance' Rosemary Phillips

### **Oncidiinae – Species**

1. *Ros. grande* Colleen Peters
2. *Gom. (Onc.) micropogon* Graham Hein

### **Zygopetalinae - Zygopetalum Hybrid**

1. *Z.* Brookside Colleen Peters

### **Other Genera – Hybrid not listed elsewhere**

1. *Den.* Senai Red Brian Coombe

- |  |                       |
|--|-----------------------|
| 2. <i>Den. Cassiope</i>                            | Wendy & Michael Lodge |
| <b>Other Genera – Species not listed elsewhere</b> |                       |
| 1. <i>Ddc. uncatum</i>                             | Colleen Peters        |
| 2. <i>Gga. galeata</i>                             | Rosemary Phillips     |

## SECOND DIVISION

### **Cymbidium – 60mm to 90mm All Colours**

- |                        |                        |
|------------------------|------------------------|
| 1. <i>Cym. Zig Zag</i> | Michael Gray & Xuan Vu |
|------------------------|------------------------|

### **Cymbidium – 60mm to 90mm Species**

- |                               |                        |
|-------------------------------|------------------------|
| 1. <i>Cym. finlaysonianum</i> | Michael Gray & Xuan Vu |
|-------------------------------|------------------------|

### **Laeliinae – Hybrid 100mm and Over**

- |  |                        |
|--|------------------------|
| 1. <i>Rlc. Tribute 'Independence Day'</i>    | Carol & Alan Jabs      |
| 2. <i>Rlc. White Wonder</i>                  | Michael Gray & Xuan Vu |
| 3. <i>Rlc. Languedoc 'Singapore Welcome'</i> | Allan Stewart          |

### **Laeliinae - Species**

- |                            |                        |
|----------------------------|------------------------|
| 1. <i>B. nodosa</i>        | Michael Gray & Xuan Vu |
| 2. <i>Psh. cochleata</i>   | Sharon Farley          |
| 3. <i>Gur. bowringiana</i> | Michael Gray & Xuan Vu |

### **Zygopetalinae – Zygopetalum Hybrid**

- |                      |                        |
|----------------------|------------------------|
| 1. <i>Z. Unknown</i> | Michael Gray & Xuan Vu |
|----------------------|------------------------|

### **Terrestrial Other Than Australian Native - Species**

- |                            |                 |
|----------------------------|-----------------|
| 1. <i>Sngl. longifolia</i> | Andrew De Cicco |
| 2. <i>Sngl. fimbriata</i>  | Rayne Riggs     |

## OIS DIVISION

### **Laeliinae – Hybrid 100mm and Over**

- |  |                             |
|--|-----------------------------|
| 1. <i>C. Hawaiian Wedding Song 'Virgin</i> | Christies Beach High School |
|--|-----------------------------|

### **Laeliinae – Hybrid under 100mm**

- |  |                         |
|--|-------------------------|
| 1. <i>Lc. Tropical Pointer 'Cheetah'</i> | Willunga Primary School |
|--|-------------------------|

### **Laeliinae – Cluster**

- |                              |                         |
|------------------------------|-------------------------|
| 1. <i>Epi. Pacific Glory</i> | Willunga Primary School |
| 2. <i>Epi. Unknown</i>       | Willunga High School    |

### **Laeliinae - Species**

- |                         |                             |
|-------------------------|-----------------------------|
| 1. <i>Epi. radicans</i> | Christies Beach High School |
|-------------------------|-----------------------------|

## MEMBERS PLEASE CHECK THIS LIST

**WITH YOUR PLANT LABELS as names have changed**

<b>620</b>	<i>Epi. (Pacific Girl x Pacific Ember)</i>	<i>Epi. Pacific Glory</i>
------------	--	---------------------------

<b>976</b>	<i>C. (Meadii x amethystoglossa)</i>	<i>Ctt. Meadii x C. amethystoglossa</i>
------------	--------------------------------------	---

## ORCHID HABITATS OF MOUNT KINABALU

Mt. Kinabalu began rising through the softer sedimentary crust over one and a half million years ago. Erosion by glaciers and heavy rainfall have sculpted, polished and streamlined the craggy peaked nunataks (outcrops bypassed by glaciation). The mountain is still rising at an estimated 5mm per year. The sheer granitic magnificence of the crested summits are often shrouded in clouds. In fact, at 4101m, it is so high that it creates its own weather patterns. A swirling low-pressure vortex of clouds surrounds the 3000m level and covers the plants with regular, refreshing moisture. Rain was seen blowing up gullies. At latitude 5 degrees nth. it is called the "Land beneath the wind."

Sir Hugh Low made the first recorded ascent of this northwest Borneo summit in 1851. The highest peak and the deepest gully is 912m. bear his name as do the orchid *Paphiopedilum lowii* and the tropical pitcher plant, *Nepenthes lowii*. The montane oak forest with 40 species of oaks recorded so far surrounds Park Headquarters which enables scientists and visitors access to the park. The 1524m to 3952m altitude range of the plants here allows for vegetation to grow in tropical, lowland forest to alpine summit zone where plants become rare. With a yearly rainfall of 305cm and a daily temperature range from 13 to 22 degrees Celsius at park H.Q., many Genera are represented in this area of 754 square kilometres.

Accessible by road from the coastal city of Kota Kinabalu (formerly Jesselton in Nth. Borneo), the Park's focal attraction is the highest peak in Sabah and Southeast Asia. (west of Irian) At 1700m, the accommodation available is in cabins, hostel rooms or hotel at the Park H.Q. The local Kadazan people regard the mountain as the sacred resting place of dead spirits. Today they practice shifting agriculture on the steep slopes encroaching the park and work as porters within. There are daily, guided walks through and around the forest clad trails nearby.

Climbing pandanus crawls up tall trees in a habitat where over half the species growing above 912m are endemic. The high mountains of New Zealand, New Guinea and Australasia have some Gondwanaland relic plants which have many relatives on Mt. Kinabalu. Ancient plant migrations between Eurasia and Australasia are evident. The *Tristania elliptica* tree with orange and white bark, *Leptospermum recurvum*, *Dacrydium gibbsiae* are some examples and the terrestrial orchids *Corybas* and *Cryptostylis* are others. Above the 2700m level are 50 genera of Australasian plants and associated insects. At species level they are mainly endemic, but the genera are so similar in appearance to Tasmanian relatives. Podocarps are a good example along with the Tea-trees.

This mountain is a floral island and animal refuge surrounded by hot, lowland forest that extends from Thailand to Sulawesi where huge, buttressed Dipterocarps, *Shorea* sp. dominate from 912m to 1200m. The montane forests of smaller trees like *Tristania*, a small leafed Myrtaceae relative and denser ground cover are hosts to an extraordinary array of epiphytic orchids and mosses. Many of these have crossed the so-called "Wallace" line with at least 38 orchid species shared with Sulawesi and 48 with New Guinea.

Between 1200m to 3000m the montane forests of Laurels, Chestnuts, Oaks and Myrtles form the high canopy with several layers of foliage competing for the intense solar energy of the tropics. On the mountain, 686 species in 121 Genera of orchids inhabit terrestrial, swampy, rocky or lithophytic and tree or epiphytic locations. *Bulbophyllum* 83 sp. *Eria* 57 sp. and *Liparis* 25 sp. are most common at all levels of exposure and forest type. *Dendrochilum* 34 sp. *Coelogyne* 36 sp. and *Dendrobium* 46 sp. are also abundant in diversity and endemism. *Arundina gramminifolia* grows in sunny, exposed places and mimics other grasses.

The ancient relic Trigoak tree, *Trigonobalanus verticillatus* grows at 1500m and is a Beechoak making suckers and acorns. Besides this tree being the ancestor of oaks and chestnuts, Dr. Ben Wallace subsequently also found this progenitor species in Chile. A derivative oak, *Lithocarpus havillandii* is a tree that sometimes hosts the huge orchid *Grammatophyllum kinabaluensis*. Its other species are widespread throughout Southeast Asia. Orchids that have been mounted in the Park H.Q. garden and shade house for closer study and conservation include the Genera *Vanda*, *Aerides*, *Trichoglottis*, *Renanthera*, *Arachnis*, *Paphiopedilum*, *Nepenthes* and *Rafflesia* (the world's largest flower) etc.. Botanists, researchers, gardeners and visitors enjoy and investigate the collection here in compact quarters. Mt. Kinabalu's 4500 species of flowering plants have been recorded by Kew and other Botanic Gardens. See the Weird Wired Web at <http://nabalu.flas.ufl.edu/kinaflor.html>

*Cymbidium elongatum*, one of 8 *Cymbidium* species grows as a terrestrial or epiphyte at 1200m to 1800m and makes continuous stems.....like a *Vanda* !!!!! Only discovered in 1988 this *Cym.* shows how remarkable evolution can be in such a dynamic and contiguous range of overlapping habitats. *Trichotosia* 12 sp. grows forming clumps and there are 7 species of *Vanilla* which grow forming long ropes in the trees. The Jewel Leaf orchid *Anoectochilus lowii* has golden veining in the leaves which are hard to find in the leaf litter. *Paraphalaeonopsis laborgensis* is a rat-tail leafed, pendulous epiphyte and *Taeniophyllum* sp. include leafless forms that flower from roots covering the branches. *Robiquetia* sp. grows with mosses and lichens on trees.

*Cryptostylis*, *Malaxis*, *Nervilia*, *Spathoglottis*, *Spiranthes*, *Corybas*, *Habenaria*, *Calanthe* and *Phaius* are terrestrial Genera shared with Australia as are *Oeceoclades* and *Dipodium*. The 7 species of *Vanilla* are related to the Australian taxon *Pseudovanilla foliata*.

The bright pink flowers of the bushy Balsam, *Impatiens platyphylla* fill the ground space between rocks occurring from 2000m to 2500m. *Rhododendrons* reach extreme diversity from tiny, stunted heath bushes near the summit, to massive trees near the Park H.Q. *Phalaeonopsis amabilis* hang from high branches shared with *Aerides odorata*, *Vanda hastifera* var *gibbsiae* and *Appendicula foliosa*.

*Nepenthes* are an intriguing group of tropical pitcher plants that secrete lures for insects in colourful, ridged vases to supplement their nutrition digested in the juices. Their roots are often in wet moss at the base of a tree, while the stems and leaves have climbed several metres up the trunk. *N. tentaculata* grows in sphagnum moss banks at

900m and is one of nine species on this mountain coexisting with *N.stenophylla*, *N. burbigae*, *N. fusca* and *N. lowii*. The largest *N. rajah* and elegant *N. edwardsiana* are rare and *N. villosa* only grows at 2400m to 3200m altitude so is an alpine plant for temperatures can fall to 5degrees C. in the early morning.

The summit trail starts at the Power Station Gate at 1829m with a profusion of greenery including *Rhododendron orbiculatum* which grows epiphytically on large trees or on rocks and *Bulbophyllum catenarium* on tree trunks just below the first hut. *B. flavescens* and *B. puglianthum* are found at the lower level. At 2100m *Coelogyne plicatissima* shows its strongly, corrugated leaves and large flowers. *Thrixspernum triangulare* is one of the monopodials that grows here and ascends to 3400m.

The tangle of ferns including Bat's wing, Fishbone, filmy, and maidenhair, lianes, liverworts and lichens indicate high humidity. The giant *Angiopteris* fern and shade loving *Tectarias* love the stream banks. *Begonias* grow lushly into trees with white flowers overhead. *Cyathea* tree ferns with flat scales of leaves covering the trunk include *C. contaminensis* and *C. tripinnata* which is related to a Queensland species. *Dicksonia* tree ferns have red hairs covering the trunk with bristles and occur at about 2000m. amongst Bamboos and rattan palms.

At Carson's Falls, the first hut, offers panoramic views of the Ranau road linking the park to the coast. Along this terrible road thousands of Allied troops died in atrocious barbarity near the end of WW2. The dainty, pink, bellflower of *Agalmyla tuberculata* spreads among the *Selaginella* ground cover. *Coelogyne cuprea* var *planiscapa* flowers cream in August, a wet month and shares the level with *C. hirtella*, *C. moultonii* and *C. monilirachis*. The beautiful large white flowers of *Dendrobium spectatissimum* and *D. parthenium* sometimes occur on *Leptospernum recurvum* shrubs. The former can stay open for six weeks and are moth pollinated. At 100mm across the petals this nigro-hirsute section marvel should be in worldwide cultivation.

On *Agathis* and *Podocarpus* trees at the second hut, *Cleisocentron merrillianum* grows to 1m and displays leaf polymorphy having both terete and strap leaves and blue flowers. Reddish forms are also known. *Flickeringia pseudoconvexa* dainty flowers last less than a day. *Eria angustifolia* *E. robusta* and *E. grandis* are encountered in the ridge forest trees. *Nepenthes lowii* likes to grow at this level but has been removed by collectors. Also found draping over tree ferns at 2600m is *Bamboo gibbsae*, named after Miss Gibbs, the first woman to ascend the mountain while working for the British Museum in 1910.

*Usnea tillandsioides* covers the gnarled and twisted branches of the *Leptospernum javanicum* at the cloud forest station level at 2700m. From the mossy, submontane forest to about 2400m, *Rhododendron stenophyllum* has a delicate, orange, tubular, flower cluster and belongs to the *Vireya* group that has 25 species growing on Kinabalu. It only grows to 3m but the pink *R. rugosum* grows to 8m and is pollinated by birds.

*To be continued....*

*Orchid names appear in italics.*

Written by [the late] Edda and Russell Job. April 1998

# SUPPORT YOUR CLUB SPONSORS



ROYAL AGRICULTURAL &  
HORTICULTURAL SOCIETY OF  
SOUTH AUSTRALIA INCORPORATED

## The Royal Adelaide Show

# NEUTROG®

## Biological Fertilisers

Supporters of OCSA, The Festival of Flowers  
& Orchids in Schools Program

Manufacturers of your fertilising needs for gardens, potted  
plants & orchids

Website: [www.neutrog.com.au](http://www.neutrog.com.au)

**Miles Harper – Club Solicitor**

Can help your legal transactions

Wills and Estates are a speciality

First interview FREE for OCSA members

427 Pulteney, Adelaide, SA 5000

Ph: 4224 0277





• PRINT



• MAILING



• SIGN & DISPLAY



• DESIGN



• E-MARKETING

For all your  
print and digital  
marketing solutions

*contact us.*

hello@laneprint.com.au  
laneprint.com.au

**lane**  
COMMUNICATIONS

**ADELAIDE ORCHIDS PTY. LTD.**

*“producing tomorrows champions today”*

**Various Genera**

**Seedling and Mericlone flasks and Tissue Culture Services available**

**Phone: 0407 398 597 Email: [jason@adelaideorchids.com](mailto:jason@adelaideorchids.com)**



**LYLTECH**  
**3D ENGRAVING**

**LILI LASER TECHNOLOGY**

Email: [liyhs.li@gmail.com](mailto:liyhs.li@gmail.com)

Website: <https://www.facebook.com/lyltech>

Mobile: 0401 093 979

## **ORCHID POT HANGERS and STANDS**

Finding that suitable plant hanger and/or stand, can be difficult. If you are looking for that unique framework to hold and display your orchids, you need to call Joe Cassar 82509382 or 0452 193 903 for a wide range of strong wire hangers and stands. Various sizes and designs available.

## **WESTERN ORCHIDS / LABORATORIES**

P.O. Box 276, Blackwood, 5051, South Aust  
Mob 0410 642 215 Email [orchids@westernorchids.com.au](mailto:orchids@westernorchids.com.au)  
Proprietor :- Kevin Western

50+ years experience as an orchids grower, orchid breeder, cloning, orchid tissue culture operations, deflasking and advanced orchid care.

1. We have over 8,000 flasks on hand for sale of seedlings and clones of species and hybrids from our own breeding and selected sources that include Cymbidium - specialising in hybrids involving and including our 3 native cymbidium species, Cattleya alliance, Zygopetalum alliance, Oncidium alliance, Dendrobium, Dockrillia, Sarcochilus, Disa, Paphiopedilum, Phragmipedium, Pleurothallids, Catasetum alliance etc. Our flasks contain superior plants for superior survival potential at deflask
2. An extensive range of Orchid Tissue Culture media to cover a vast range of germinating, explant start and multiply and final replant/growing medium including terrestrials
3. Hormone Keiki Paste locally formulated and prepared to get that Phalaenopsis flower stem to make keikis.
4. Tissue culture course. Two-day, practical and theoretical components fully explained, practiced and presented with hands-on experience.
5. Tissue culture consultancy – to instruct and solve problems and production issues
6. A range of potted and mounted plants of cool to cold growing species and hybrids from my flasks - especially Sarcochilus
7. Refurbished and tested, second hand autoclaves
8. Contract seed-sowing and cloning services

## SOUTH AUSTRALIAN ORCHID CLUB CONTACTS

### Cymbidium Orchid Club of S.A.

Secretary: Christine Robertson  
PO Box 454,  
Strathalbyn, SA 5255  
Ph. (08) 8536 3948

### Gawler Districts Orchid Club

Secretary: Rob Albrecht  
Phone: 85643761  
PO Box 78, Angaston, SA 5353

### Millicent Orchid Society

Secretary: Robert Wood  
Ph. (08) 8723 2953  
c/o 37 Wehl Street North Mount Gambier,  
SA 5290

### Mount Gambier Orchid Society

Secretary: Robert Wood  
Ph. (08) 8723 2953  
c/o 37 Wehl Street North Mount Gambier,  
SA 5290

### Murray Bridge & Districts Orchid Club

Secretary: Wendy Schmerl  
Mobile. 0435 909 246  
PO Box 652, Murray Bridge, SA 5253

### Native Orchid Society of S.A.

Secretary: Lindy McCallum  
PO Box 14 Kensington Park, SA 5068  
Email: [nossa.secretary@gmail.com](mailto:nossa.secretary@gmail.com)  
Website: [nossa.org.au](http://nossa.org.au)

### Port Lincoln Orchid Club

Secretary: Meg Coleman  
PO Box 1335 Port Lincoln, SA 5606  
Ph. (08) 8682 1463

### Riverland Orchid Society

Secretary: Marianne Lynch  
Ph. (08) 8588 7384  
PO Box 746, Berri, SA 5343

### South Australian Orchidaceous Society

Secretary: Pauline Simcock  
Ph. (08) 8390 2212  
PO Box 526, Montacute SA 5134

### South Coast Orchid Club of S.A.

Email : [scocsa@outlook.com](mailto:scocsa@outlook.com)  
Web : [www.scocsa.net](http://www.scocsa.net)  
Postal Address : C/- The Secretary  
PO Box 314,  
Oaklands Park, SA 5046  
Phone: 0479 162 527

### Sunraysia Orchid Club

Secretary: Diane Cavanagh  
Ph. (03) 5025 7305  
PO Box 1818, Mildura, Vic 3502

### Whyalla Orchid Club

Secretary: Brian Noble  
58 Ward Street, Whyalla, SA 5600

**The Orchid Club of South Australia Inc.**  
**Program for 2023**

**NEXT NIGHT MEETING**

**4<sup>th</sup> of May 8:00pm**

**Enfield Community Centre, 540 Regency Road, Enfield**

**DATE**

4<sup>th</sup> May

1<sup>st</sup> June

**PRESENTER**

Graham Hein

Graham Hein

**TOPIC**

Growing Zygopetalums

Laelia's my way

**DAY GROUP MEETING**

**12<sup>th</sup> May from 2pm - 4pm**

**Enfield Community Centre, 540 Regency Road, Enfield**

**DATE**

12<sup>th</sup> May

9<sup>th</sup> June

**PRESENTER**

Ron Parish

Coralie Hills

**TOPIC**

All about Jewel orchids

Preparing plants for the  
showbench

**DIARY DATES FOR THE 2023 SEASON**

8<sup>th</sup> July

23<sup>rd</sup> September

2<sup>nd</sup> – 10<sup>th</sup> September

4<sup>th</sup> November

Winter Show

Spring Show

Orchid Competition

Sarc Dinner

Klemzig Community Hall

Klemzig Community Hall

Royal Adelaide Show

Enfield Community Centre

**A Member of the Australian Orchid Council Inc.**



**Like The Orchid Club of South Australian on Facebook**

