

**Published by The Orchid Club of South Australia  
Inc.**

**SOUTH AUSTRALIAN  
ORCHID  
BULLETIN  
JUNE 2023**



**AUTUMN SHOW GRAND CHAMPION**



**Grown by Graeme & Maureen Hazledine**

## ORCHID CLUB OF SOUTH AUSTRALIA LIFE MEMBERS

1966	Neil Christoph†	1997	Eric Furness†
1970	H C England†	1998	Cyril Clifford†
1974	Bernie Hansen†	1999	Don Nesbitt†
1975	Rex Thompson†	2001	Sally White
1975	Syd Monkhouse	2002	Richard Fishlock
1976	John Lewis	2003	Bob Collins†
1978	Mick Chenoweth†	2007	Reg Faulkner†
1979	Merv Strout†	2007	Pat Faulkner
1980	Colin Jennings†	2007	Peter Hills†
1984	Merv Donhardt†	2007	Coralie Hills
1985	Russell Schultz†	2007	Judy Penny†
1985	Harry Lambert	2008	David Harmer
1985	John Harris	2008	Pat Harmer
1985	Kath Harris†	2009`	Russell Job†`
1985	Barbara Clayton†	2009	Edda Viskie†
1985	Lorraine Cottle	2010	Gordon Hewitt†
1985	Myrnie Jennings	2012	Murray Baulderstone†
1986	Nick Packard†	2012	Leo Micenko†
1987	Margaret Hewit†	2014	John Gay
1987	Shirley Monkhouse†	2014	Bev Gay
1988	Don Gallagher	2014	Iain Kilpatrick†
1988	Kel Staples†	2015	Ron Yates
1990	Allan Sullivan†	2016	Graham Hein
1992	Bill White†	2017	Lesley Fenton
1992	Roy Hargreaves†	2017	John Lampard
1994	Reg Shooter†	2019	Trevor Camac
1994	Enid Brooking†	2021	Trevor Garard
1996	Ted Chance†	2021	Les Nesbitt
1996	Marjorie Chance†	2023	Wendy Lodge
			† Denotes Deceased

**Editors Contact for Copy:** Danielle Mazurkiewicz

Email: [editor@ocsa.org.au](mailto:editor@ocsa.org.au); Phone: 0433 016 673

The opinions expressed by authors do not necessarily reflect the views of the Editor or the Committee of The Orchid Club of South Australia Inc.

Digital images by Marianne Carter

**COPYRIGHT:** All contributions to this Bulletin, which have acknowledged authors are automatically covered by copyright. We believe that most authors would be willing to allow free use of articles if written approval is sought from them through the Secretary

**The Official Bulletin of The Orchid Club of S.A. Inc.**  
**Patron: Mr. Rod Bunten**

<b><u>Management Committee Members</u></b>		
<b><u>President</u></b> Coralie Hills 124/6 Price Street, Melrose Park, SA 5039 Ph. 0414 522 675 <a href="mailto:president@ocsa.org.au">president@ocsa.org.au</a>	<b><u>Secretary</u></b> Michael Gray <a href="mailto:secretary@ocsa.org.au">secretary@ocsa.org.au</a> GPO Box 730 Adelaide, S.A. 5001 Ph. 0490 033 905	<b><u>Hon Treasurer</u></b> Graham Hein 13 Underwood Close Golden Grove SA 5125 Ph: 0488 788 700 <a href="mailto:treasurer@ocsa.org.au">treasurer@ocsa.org.au</a>
<b><u>Show Marshall</u></b> Des Bettcher Ph. 0466 797 485	<b><u>Registrar of Judges</u></b> Wendy Lodge Ph. 0421 495 630	<b><u>Past President</u></b> Des Bettcher
<b><u>Editor</u></b> Danielle Mazurkiewicz Ph. 0433 016 673 <a href="mailto:editor@ocsa.org.au">editor@ocsa.org.au</a>	<b><u>Asst. Registrar of Judges</u></b> Rayne Riggs Ph. (08) 8280 9165	<b><u>Committee Members</u></b> Sharon Farley Ph. 0409 118 348 Andrew De Cicco Ph. 0439 683 706 Carmel Edwards Ph. 0434 084 313
<b><u>Education &amp; Publicity</u></b> Trevor Garard Ph. 0414 807 634		
<b><u>Day Group Coordinator:</u></b> Alan Jabs – Ph: 0417 779 883		

**CONTENTS**

Life Members	2	Autumn Show Report	8
Management Committee	3	From the Registrar for May	8
President's Word	4	Autumn Show Champions	10
New Members	5	Floral Results May	13
Beginner's Group June	5	OCSA Winter Show Details	15
Guest Speaker Night Meeting	5	Chromolithograph History	19
Guest Speaker Day Meeting	6	Program Details	24
Day Group Report May	6		



## **PRESIDENT'S WORD MAY**

I find it hard to believe that we are in June. I know that I have been so busy this year, but time has really flown. The weather has now turned cold, so we must be so careful as we check our orchids. It's so easy to break a new spike and they are now really starting to show. So be very careful and if possible, just do things with your orchids when the sun has had a chance to warm your plants.

Our next major event is the Winter Show. This will be held in the Klemzig Community Hall, on Saturday 8 July from 10am to 4pm. Plants for Display and for Sale will be received from 5pm on the Friday afternoon which will be straight after the Day Meeting. For those who have never attended the Day Meeting you should come along some time. Not only is it a good meeting but it is a fun time together. Alan does a great job of running the meeting with the Judges talking about all the plants that have been brought in and then there is usually a monster raffle that must be seen to be believed with all this followed by a great afternoon tea. What a great way to spend your Friday afternoon.

The May Night meeting had Graham Hein talk about Zygo's and it was interesting to see how they changed with the crossing of the different species. Some of the crossings have not turned out to be that good (in my eyes) but there were many nice intergenerics among them and to learn how to look after them to get the best display was great.

Graham did such a great job he is going to speak at the June Night meeting as well. Graham is well known for flowering great *L. anceps*. Graham will share how he does this as well as some of the other Laeliinae that he grows and how he has noticed the difference in growing these orchids from one suburb to another.

The June Day Meeting will be a time where I will share about how to prepare your plants for the Show Bench. Even though I have not shown much over the last few years I have learnt a lot by watching and talking to many growers in not only our Club, but other groups and I will have a few tips for all.

In the meantime, look after your plants so that you can have a successful and colourful display of flowers to enjoy.

*Coralie Hills FAOC, President and Life Member - Orchid Club of SA Inc.*



## WELCOME NEW MEMBERS



The president and committee, on behalf of the members, welcome the following new members to the club. We trust that your time with us is beneficial and rewarding to you in your hobby. Your State Show Number and Division Id are printed in **BOLD** details below.

<u>NAME</u>	<u>NUMBER</u>	<u>DIVISION</u>
Helen & Dennis Pfeiffer	<b>332</b>	<b>2<sup>nd</sup></b>
Leonie & Mario Primiero	<b>338</b>	<b>2<sup>nd</sup></b>



## BEGINNER'S GROUP

The Beginner's Group will again be this month so come along to the June Monthly Meeting and be a part of the group from 7:15pm to 7:45pm. There will be expert club growers to help new and older members in the art of growing and cultivating orchids so come along early to increase your knowledge.



## GUEST SPEAKER JUNE NIGHT MEETING

The next night meeting will be held at the Enfield Community Centre, 540 Regency Road, Enfield on Thursday the 1<sup>st</sup> of June commencing at 8pm. The guest speaker for this month will again be our treasurer of the club Graham Hein and this month his topic will be "growing Laelias my way". Graham purchased his first *Laelia anceps* 20 years ago, and since then has either purchased or has been given many different forms of *Laelia anceps*. This is one of his favourite genera, so will endeavour to pass on how he grows them. I encourage you to come and find out what you need to do with your plants.

## GUEST SPEAKER DAY JUNE GROUP MEETING

The June Day Group meeting will be held at the Enfield Community Centre, 540 Regency Road, Enfield on Friday the 9<sup>th</sup> of June from 2pm to 4pm. This month our President, Coralie will provide valuable information on both how to prepare your plants for the show bench including how to correctly fill out the show label and attach to the plant properly; so, I encourage you to attend.



## FRIDAY GROUP REPORT– MAY

What a gem of a meeting this month. Well attended although we did have apologies from Wendy, Rayne, Enid, Ron and Elizabeth.

Guest speaker Ron Parish presented a wonderful session on Jewel Orchids. Hands up who knew how many there were or even that we have an Australian version. Ron's notes will be up on the OCSA forum Facebook page in the coming weeks so look out for that.

Once again, a huge thankyou to all who gave plants to the raffle table as we went round nearly two and a half times. This is wonderful and clearly shows that we are one big family keen to be involved and support each other. May it long continue.

Plants on the table were all different this month not a single double up which is great as it shows the diverse growing interests among all of us.

Winning plant of the month was grown by Lodia Dobrovolski. A very nice *Cymbidium* called *Cym. dayanum* (see image) Well done Lodia..

Lodia has asked if there are any members living in or around the Seaton area if she could get a lift to the Friday meetings as she cannot always get family to help out and really wants to be there each month. **Contact me if you can help and I will put you in contact with Lodia.**

### **Please note:**

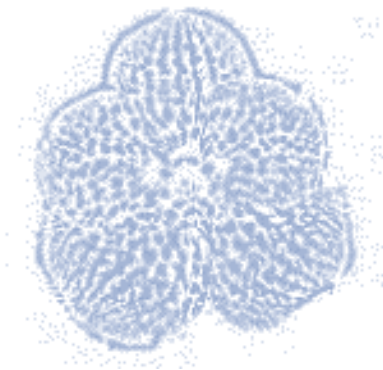
I have organised a visit to the Murray Bridge Orchid Club which will be their June meeting. It is on the 4<sup>th</sup> Sunday of the month (June 25<sup>th</sup>)

They too have a raffle table we can help out with. It will be self-drive and the address is the Seventh Day Adventist Hall, corner of Myall Ave and Standen St, Murray Bridge. The hall is open from 11am. Their committee meeting is at 11:30am and then their 'formal' meeting starting at 2pm. Tea and Coffee are available, but BYO lunch as required. (or maybe lunch in Murray Bridge then come along around 2pm) Another suggestion for those with not enough plants is to also visit State Flora as that is close by as well.

With the autumn show now behind us (held during the Festival of Flowers) we now turn to the Winter and spring shows. To that end for the Friday Group, we shall have a presentation about preparing your plants for showing at our June meeting amongst other topics.

We have lots more to come throughout the year as well which makes for an exciting next six months.

Next meeting: Thursday Night, June 1st - Graham Hein – Laelias my way  
Friday Day, June 9th - Coralie Hills – Prep plants for shows.



# **AUTUMN SHOW REPORT 2023**

It was no surprise that a beautifully present plant of *Brassovola nodosa* received Grand Champion of the show. The plant belonged to Graeme and Maureen Hazledine and it had multiple inflorescences, each with anywhere from 3-6 pale green flowers with a contrasting white/cream labellum. The plant also received Champion Open Division, Champion Laeliineae, Champion Species and because of the number of inflorescences, Champion Specimen. Congratulations to you both on a well grown and displayed plant. It certainly looked terrific once it was placed on the stand as a focal point of the club's display.

Other Division Champions were: First Division Champion won by Brian Coombe with his plant of *Dendrochilum uncatum*, which also won Champion Other Genera, Second Division Champion was won by John and Barbara Harris with their plant of *Oncidium Sharry Baby*. Champion OIS Division was won by the students from Willunga Primary School with their plant of *Cattleya Tropical Pointer* 'Cheetah'. Well done to these Champion winners as well as our other category winners that received Rosettes.

There was a total of 89 plants bought in for judging, and our 3 teams of judges finished in an hour and a half. Many Thanks to the judging panel members for their work, especially our country judges from Mount Gambier, Wilmington and Loveday (in the Riverland) who came to help. I would also like to thank the members who helped put our display together, it was definitely a job well done.

Wendy Lodge, OCSA Registrar.

•+°•❖☾ ☾❖•°+•\*

## **FROM THE REGISTRAR FOR MAY**

### **Plant of Open Division and Registrar's Choice**

The Plant chosen on the night from Open Division was *Stenoglottis longifolia*, which had 32 inflorescences covered with pink spotted flowers held well above the foliage. It is a progressive flowerer, as the bottom flowers die off, new ones are opening at the top. It is judged as a *terrestrial other than* and it comes originally from South Africa. This is also a species. The growing medium





is sand and pine bark in a 12 inch squat pot, and is grown in a shade house. The plant belongs to Les Nesbitt.

Les informs us that he grows this plant cool, watering as required, 2-3 days in summer and receiving only rain during winter when the plant is dormant. He uses Neutrog products as fertilizer and that the plant is potted in a mix of sand and bark. His main comment was that the plant dies down in winter when it can be repotted or divided and regrows in spring.

## Plant of First Division



A beautifully presented plant of *Cyrtocidium* Kolibri grown by Graham Hein won plant of this division. The *Ctd.* Kolibri had a single inflorescence with a total of 14 red/pink flowers with interesting markings on all the segments and a bright yellow splash on the labellum. It used to be known as a *Wilsonara*. The plant was originally registered in 1984 and other plants of it have been awarded 11 times, with most of them being in the USA.

It was a good sized plant growing in a 125mm squat pot, and it obviously growing in the right position.

Graham tells us that he grows his plant cool, in a shade house with 70% sand coloured shade cloth, and the plant hangs reasonably high to get higher light. His watering varies from every other day to once a fortnight, depending on the temperature. Graham likes to use Neutrog Strike Back for Orchids liquid and then a Seamungus/Powerfeed combination every third watering. A very nice plant Graham.

## Plant of Second Division



Andrew De Cicco bought in a very nice *Zygopetalum maculatum* tonight. The Judges decided it was a very well grown plant, with 3 inflorescences, 1 had 7 flowers, 1 had 6 flowers and the last had 5 flowers. The flowers were typical colour and shape for the species and all the leaves were very clean for a *Zygopetalum*. A credit to the grower.

According to Andrew, he finds this plant easy to grow. He grows it cool in a shade house, and says he keeps it moist, watering daily if required in summer and generally rainfall is sufficient during winter. Neutrog Liquid Strike Back for Orchids and Seamungus are his preferred fertilizing regime, and the plant is growing in medium pine bark. Keep up the good work Andrew.

## **AUTUMN SHOW CHAMPIONS**

- 1 **GRAND CHAMPION, CHAMPION OPEN DIVISION, CHAMPION LAELIINAE, CHAMPION SPECIES, CHAMPION SPECIMEN:** *B. nodosa* - Graeme & Maureen Hazledine – see cover photo
- 2 **CHAMPION ONCIDIINAE:** *Mtssa.* Kismet 'Kind Kai' - Roger Herraman
- 3 **CHAMPION PAPHIOPEDILUM:** *Paph.* Manning Park - Graeme & Maureen Hazledine
- 4 **CHAMPION ZYGOPETALINAE:** *Hmwsa.* Aussie Quest - Chee Ng
- 5 **CHAMPION AUSTRALIAN NATIVE:** *Ptst. truncata* - Les Nesbitt
- 6 **CHAMPION FIRST DIVISION, CHAMPION OTHER GENERA:** *Dendrochilum uncatum* - Brian Coombe
- 7 **CHAMPION SECOND DIVISION:** *Onc.* Sharry Baby - John & Barbara Harris
- 8 **CHAMPION TERRESTRIAL OTHER THAN AUSTRALIAN NATIVE:** *Sngl. longifolia* - Andrew De Cicco
- 9 **CHAMPION OIS DIVISION:** *C.* Tropical Pointer 'Cheetah' - Willunga Primary School

## AUTUMN SHOW CHAMPIONS

2



3



4



5



6



8



9



# MAY MONTHLY FLORAL RESULTS

## BEST ORCHID OPEN DIVISION AND REGISTRAR'S CHOICE

*Stenoglottis longifolia* grown by Les Nesbit

## BEST ORCHID FIRST DIVISION

*Cyrtocidium Kolibri* grown by Graham Hein

## BEST ORCHID SECOND DIVISON

*Zygopetalum maculatum* grown by Andrew De Cicco

## OPEN DIVISION

### **Australian Native Terrestrial - Species**

- |                             |             |
|-----------------------------|-------------|
| 1. <i>Ptst. sanguinea</i>   | Les Nesbitt |
| 2. <i>Ptst. ophioglossa</i> | Les Nesbitt |

### **Laeliinae - Species**

- |                               |                    |
|-------------------------------|--------------------|
| 1. <i>Epi. nocturnum</i> 'DP' | Ron & Irene Parish |
|-------------------------------|--------------------|

### **Oncidiinae – Species**

- |                       |                    |
|-----------------------|--------------------|
| 1. <i>Ros. grande</i> | Ron & Irene Parish |
|-----------------------|--------------------|

### **Paphiopedilum – Non-standard Shape Hybrid**

- |  |                    |
|--|--------------------|
| 1. <i>Paph.</i> (Spicy Henry x charlesworthii) | John Seidel        |
| 2. <i>Paph.</i> Transdoll                      | Ron & Irene Parish |

### **Paphiopedilum – Species**

- |                             |             |
|-----------------------------|-------------|
| 1. <i>Paph. spicerianum</i> | John Seidel |
| 2. <i>Paph. sulivongii</i>  | John Seidel |

### **Paphiopedilum – Standard Shape Hybrid**

- |                                   |                    |
|-----------------------------------|--------------------|
| 1. <i>Paph.</i> (Orchilla x Onyx) | John Seidel        |
| 2. <i>Paph.</i> Deer Lake         | Ron & Irene Parish |

### **Zygopetalinae – Hybrid Inter-generic**

- |  |             |
|--|-------------|
| 1. <i>Zga.</i> (Denpasar x Kings Park) | John Seidel |
|--|-------------|

### **Zygopetalinae – Species**

- |                       |             |
|-----------------------|-------------|
| 1. <i>Z. crinitum</i> | Les Nesbitt |
|-----------------------|-------------|

### **Zygopetalinae - Zygopetalum Hybrid**

- |                                      |           |
|--------------------------------------|-----------|
| 1. <i>Z.</i> Kiwi Choice 'Highclere' | John Moon |
|--------------------------------------|-----------|

### **Other Genera – Species not listed elsewhere**

- |                         |                    |
|-------------------------|--------------------|
| 1. <i>Coel. usitana</i> | Ron & Irene Parish |
|-------------------------|--------------------|

### **Terrestrial Other Than Australian Native - Species**

- |                            |             |
|----------------------------|-------------|
| 1. <i>Sngl. longifolia</i> | Les Nesbitt |
|----------------------------|-------------|

## FIRST DIVISION

### **Australian Native Epiphyte - Hybrid**

- |                            |                |
|----------------------------|----------------|
| 1. <i>Den.</i> Hilda Poxon | Colleen Peters |
|----------------------------|----------------|

### **Laeliinae – Cluster**

1. *Ctt. Browniae* 'Riga' Graham Hein

### **Oncidiinae - Hybrid under 60mm**

1. *Onc. Kolibri* Graham Hein  
2. *Onc. Sharry Baby* Colleen Peters

### **Zygopetalinae - Zygopetalum Hybrid**

1. *Z. B.G. White* 'Abbeville' Graham Hein

### **Terrestrial Other Than Australian Native - Species**

1. *Sngl. longifolia* Graham Hein

## **SECOND DIVISION**

### **Cymbidium – 60mm to 90mm All Colours**

1. *Cym. Red Ruby* 'Pacific' Andrew De Cicco

### **Cymbidium – under 60mm All Colours**

1. *Cym. Zig Zag* Michael Gray & Xuan Vu  
2. *Cym. Osborn* Michael Gray & Xuan Vu

### **Laeliinae – Hybrid 100mm and Over**

1. *Rlc. [Sc.] Pastoral* 'Innocence' Michael Gray & Xuan Vu

### **Laeliinae – Cluster**

1. *Ctt. Browniae* 'Riga' Dene Slape

### **Paphiopedilum – Non-standard Shape Hybrid**

1. *Paph. Oodnadatta* Michael Gray & Xuan Vu

### **Phalaenopsis/Vandaeae - Hybrid 80mm and Over**

1. *Phal. unknown* Sue Gaardboe

### **Zygopetalinae – Species**

1. *Z. maculatum* Andrew De Cicco

### **Other Genera – Hybrid not listed elsewhere**

1. *Ctsm. Doctor* Desmond Wollard Carol & Alan Jabs

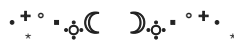
## **OIS DIVISION**

### **Laeliinae – Hybrid under 100mm**

1. *C. Dendi's Double* 'You Beaut' Willunga High School O. C.

### **Terrestrial Other Than Australian Native - Species**

1. *Sngl. longifolia* Willunga Primary School



## **OCSA 2022 WINTER SHOW DETAILS**

To be held at the **Klemzig Community Hall**, 232 North East Road, Klemzig on **Saturday the 8<sup>th</sup> of July 2023**.

**Put In:** Friday the 7<sup>th</sup> of July 2023 between 5:00pm & 6:00pm.

Orchids can be brought to the hall and delivered to the plant Marshals on duty.

Judging will begin at **6.00pm sharp**.

**Parking:** Available in the Gaza Sports & Community Car Park on the evening of **Friday the 7<sup>th</sup> of July 2023** (entry is off Wellington Street).

**Foliage Plants:** These can be brought in with your orchids. Please make sure that your exhibitor's number is on all pots. Please bring in as many as you can because all will be needed to make our displays more attractive.

**Plants and Labelling:** Your plants should be presented ready for exhibition. Please ensure that the correct label for your division is attached to each plant, displaying the plant name and your exhibitor number on the label.

**Show schedules** – See Show Schedule in June Bulletin.

**Take Out:** Take out will occur after **4:00pm** on **Saturday the 8<sup>th</sup> of July 2023**.

Exhibits must not be removed from the show before this time without approval.

All plants must be removed, if a member is unable to remove their plants and wish to have another person pick them up, please notify Eric Molnar (0448 870 097) of arrangements before taking out with a written letter of authorization.

***Growers please note: - Plants suspected of being infected with virus, disease or insect infestation will not be eligible for competition and such plants will be asked to be removed from the show.***

**Award Judging:** If you have a plant you wish to nominate for an AOC award then this can be arranged by phoning Stephen Lynch on Ph No. 8588 7384 or Mob. 0428 152 235 **at least 48 hours before** the commencement of show judging. (6:00pm) on **Friday the 7<sup>th</sup> of July 2023**.

**Trading Table:** Bring your plants through the front entrance of the hall between **5:00pm and 6:00pm on Friday the 7<sup>th</sup> of July 2023** and have them checked in by the trading table helpers.

Ensure all labels and sales sheets are fully and correctly filled in, otherwise plants may not be accepted for sale.

Please check plant condition and remove all husks from bulbs and dead ends on leaves, Cymbidiums should preferably have inflorescences visible.

**Please present your sale plants in the condition you would expect if you were buying the plant.**

**Show helpers:** If you can assist with the running of the show, on the Plant sales stall, or helping in the kitchen this would be very much appreciated.  
 Please contact Eric Molnar (0448 870 097) if you can help during the show so that your name can be included on the roster.

An admission fee of **\$5.00** will be charged for entry to the Winter Orchid Show.

**The Show will be Open on Saturday the 8<sup>th</sup> of July from 10:00am until 4:00pm.**  
 Light refreshments will be available for the duration of the show.

If any further information is required, please contact:  
 Eric Molnar (0448 870 097)  
 Registrar of Judges Wendy Lodge (0421 495 630)

**AN EXAMPLE OF HOW YOUR SALES SHEET & PLANT LABELS SHOULD LOOK.**

THE ORCHID CLUB OF SOUTH AUSTRALIA

PLANT SALES RECORD

NAME....C.Smith.....
SHOW NUMBER.....500.....

SHEET NO.....1...Of...1.....

Plant No	PLANT DESCRIPTION	PRICE \$	Reduced Price \$
1	Cym. One Tree Hill ‘Doris’	\$25.00	

**PLANT LABEL SAMPLE**

ORCHID CLUB OF SOUTH AUSTRALIA SHOW NUMBER <b>500</b> PLANT NO. <b>21</b> PLANT NAME <b>Cym. One Tree Hill ‘Doris’</b> COOL/INTERMEDIATE/WARM COLOUR <b>Yellow</b>	OCSA PLANT No. <b>21</b> SHOW NUMBER <b>500</b> PRICE <b>\$25</b>
--	---





# **Orchid Club of SA Inc**

## **2023 WINTER SHOW**

**GRAND CHAMPION ORCHID OF THE SHOW: \$50 + OCSA Rosette**

**GENUS CHAMPIONS: \$15 + OCSA Rosette**

Australian Native	Cymbidium	Oncidiinae	Laeliinae
Paphiopedilum	Phalaenopsis/Vandaeae		
Zygopetalinae	Terrestrial other than Australian Native	Any Other Genera	

(Includes Dendrobium other than Australian Native)

**DIVISION CHAMPIONS: \$20 + OCSA Rosette**

**CHAMPION SPECIES: OCSA Rosette**

**CHAMPION SPECIMEN: OCSA Rosette**

**In all Divisions**      **BEST: \$5 PLUS CARD, FIRST & SECOND**  
**PLACE: CARDS ONLY** in all the following:

### **AUSTRALIAN NATIVE**

Epiphyte Hybrid  
Epiphyte Species  
Terrestrial Hybrid  
Terrestrial Species

**Best Australian Native**

### **CYMBIDIUM 90mm and Over**

Red/Pink/Brown  
Yellow/Green/White/Cream  
Any Other Colour  
Species

**Best Cymbidium 90mm and Over**

### **CYMBIDIUM 60mm to 90mm**

Red/Pink/Brown  
Yellow/Green/White/Cream  
Any Other Colour  
Species

**Best Cymbidium 60mm to 90mm**

### **ONCIDIINAE**

Hybrid 60mm and Over  
Hybrid Under 60mm  
Species

**Best Oncidiinae**

### **PAPHIOPEDILUM**

Standard Shape Hybrid  
Non-Standard Shape Hybrid  
Species

**Best Paphiopedilum**

### **PHALAENOPSIS/VANDEAE**

Hybrid – 80mm and Over  
Hybrid – Under 80mm  
Species

**Best Phalaenopsis/Vandaeae**

### **ZYGOPETALINAE**

Zygopetalum Hybrid  
Hybrid – Inter-generic  
Species

**Best Zygopetalinae**

### **CYMBIDIUM Under 60mm**

Red/Pink/Brown

Yellow/Green/White/Cream

Any Other Colour

Species

**Best Cymbidium Under 60mm**

### **TERRESTRIALS OTHER THAN AUSTRALIAN NATIVE**

Hybrid

Species

**Best Terrestrial other than Australian  
Native**

### **LAELIINAE**

Hybrid 100mm and Over

Hybrid Under 100mm

Cluster

Species

**Best Laeliinae**

### **ANY OTHER GENERA - Not listed elsewhere (Including Den Other than Aust. Native)**

Hybrid

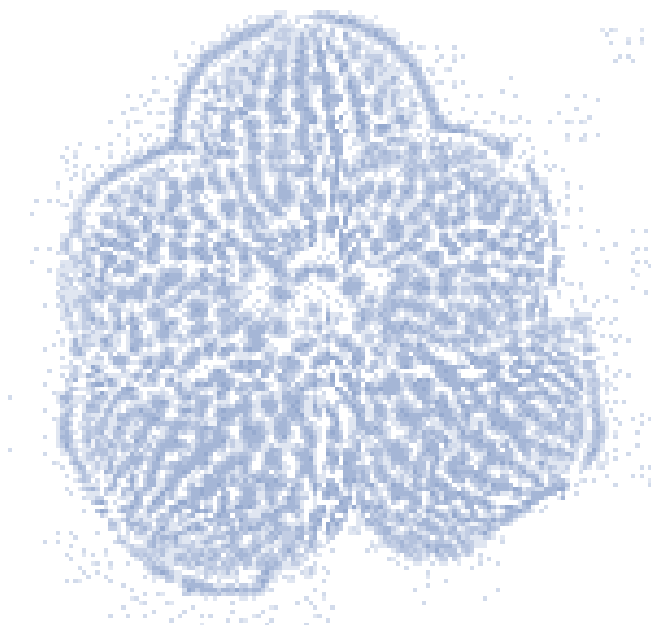
Species

**Best other Genera – Not listed elsewhere**

BEST Australian Native Hybrid in the Show will be eligible to be nominated for the Ira Butler and the Western Orchids Trophy

BEST Australian Native Species in the Show will be eligible to be nominated for the Bill Murdoch and Les Nesbitt Trophy

Nomination G. Hermon Slade Australasian Trophy for Hybrid & Species



## CHROMOLITHOGRAPH HISTORY



*Cattleya bowringiana*

The *Riechenbachia* is a collection of 192 antique chromolithographic prints depicting many of the most horticulturally desirable orchids introduced to cultivation in Britain last century. Conceived and financed by the leading British nurseryman of the day, Frederick Sander, and named after his associate H. G. Reichenbach (the famous German taxonomist), the *Riechenbachia* prints are now collector's items world-wide.

Most of the original, life-sized water-colours of orchids in flower were painted by Henry George Moon (1857-1905) in a studio at Sander's nursery in Saint Albans near London. Moon, who already had a reputation as a painter of both flowers and landscapes, was employed by Sander in 1885 specifically to make the *Riechenbachia* water-colours. However, a few of the paintings were done by other

artists, the most well-known being Walter H. Finch, who is recorded as having over 10,000 drawings published! The orchids depicted were in many cases supplied by influential gentlemen growers such as the Duke of Marlborough, Lord Rothschild, Mr. R. H. Measures and Mr. S Courtauld.

The above framed chromolithograph is for sale from the club for \$200:00, includes a statement of authentication; contact Des (Bettcher) 0466 797 485 if you are interested.

## **SUPPORT YOUR CLUB SPONSORS**



### **The Royal Adelaide Show**



**Supporters of OCSA, The Festival of Flowers  
& Orchids in Schools Program**

**Manufacturers of your fertilising needs for gardens, potted  
plants & orchids**

**Website: [www.neutrog.com.au](http://www.neutrog.com.au)**

**Miles Harper – Club Solicitor  
Can help your legal transactions  
Wills and Estates are a speciality  
First interview FREE for OCSA members  
427 Pulteney, Adelaide, SA 5000  
Ph: 4224 0277**



- **PRINT**



- **MAILING**



- **SIGN & DISPLAY**



- **DESIGN**



- **E-MARKETING**

**For all your  
print and digital  
marketing solutions**

*contact us.*

hello@laneprint.com.au  
laneprint.com.au

**lane**  
COMMUNICATIONS

**ADELAIDE ORCHIDS PTY. LTD.**

***“producing tomorrows champions today”***

**Various Genera**

**Seedling and Mericlone flasks and Tissue Culture Services available**

**Phone: 0407 398 597 Email: [jason@adelaideorchids.com](mailto:jason@adelaideorchids.com)**



**LYLTECH**  
**3D ENGRAVING**

**LILI LASER TECHNOLOGY**

Email: [liyhs.li@gmail.com](mailto:liyhs.li@gmail.com)

Website: <https://www.facebook.com/lyltech>

Mobile: 0401 093 979

### **ORCHID POT HANGERS and STANDS**

Finding that suitable plant hanger and/or stand, can be difficult. If you are looking for that unique framework to hold and display your orchids, you need to call Joe Cassar 82509382 or 0452 193 903 for a wide range of strong wire hangers and stands. Various sizes and designs available.

### **WESTERN ORCHIDS / LABORATORIES**

P.O. Box 276, Blackwood, 5051, South Aust  
Mob 0410 642 215 Email [orchids@westernorchids.com.au](mailto:orchids@westernorchids.com.au)  
Proprietor :- Kevin Western

50+ years experience as an orchids grower, orchid breeder, cloning, orchid tissue culture operations, deflasking and advanced orchid care.

1. We have over 8,000 flasks on hand for sale of seedlings and clones of species and hybrids from our own breeding and selected sources that include Cymbidium - specialising in hybrids involving and including our 3 native cymbidium species, Cattleya alliance, Zygopetalum alliance, Oncidium alliance, Dendrobium, Dockrillia, Sarcochilus, Disa, Paphiopedilum, Phragmipedium, Pleurothallids, Catasetum alliance etc. Our flasks contain superior plants for superior survival potential at deflask
2. An extensive range of Orchid Tissue Culture media to cover a vast range of germinating, explant start and multiply and final replat/growing medium including terrestrials
3. Hormone Keiki Paste locally formulated and prepared to get that Phalaenopsis flower stem to make keikis.
4. Tissue culture course. Two-day, practical and theoretical components fully explained, practiced and presented with hands-on experience.
5. Tissue culture consultancy – to instruct and solve problems and production issues
6. A range of potted and mounted plants of cool to cold growing species and hybrids from my flasks - especially Sarcochilus
7. Refurbished and tested, second hand autoclaves
8. Contract seed-sowing and cloning services

## **SOUTH AUSTRALIAN ORCHID CLUB CONTACTS**

### **Cymbidium Orchid Club of S.A.**

Secretary: Christine Robertson  
PO Box 454,  
Strathalbyn, SA 5255  
Ph. (08) 8536 3948

### **Gawler Districts Orchid Club**

Secretary: Rob Albrecht  
Phone: 85643761  
PO Box 78, Angaston, SA 5353

### **Millicent Orchid Society**

Secretary: Robert Wood  
Ph. (08) 8723 2953  
c/o 37 Wehl Street North Mount Gambier,  
SA 5290

### **Mount Gambier Orchid Society**

Secretary: Robert Wood  
Ph. (08) 8723 2953  
c/o 37 Wehl Street North Mount Gambier,  
SA 5290

### **Murray Bridge & Districts Orchid Club**

Secretary: Wendy Schmerl  
Mobile. 0435 909 246  
PO Box 652, Murray Bridge, SA 5253

### **Native Orchid Society of S.A.**

Secretary: Lindy McCallum  
PO Box 14 Kensington Park, SA 5068  
Email: [nossa.secretary@gmail.com](mailto:nossa.secretary@gmail.com)  
Website: [nossa.org.au](http://nossa.org.au)

### **Port Lincoln Orchid Club**

Secretary: Meg Coleman  
PO Box 1335 Port Lincoln, SA 5606  
Ph. (08) 8682 1463

### **Riverland Orchid Society**

Secretary: Marianne Lynch  
Ph. (08) 8588 7384  
PO Box 746, Berri, SA 5343

### **South Australian Orchidaceous Society**

Secretary: Pauline Simcock  
Ph. (08) 8390 2212  
PO Box 526, Montacute SA 5134

### **South Coast Orchid Club of S.A.**

Email : [scocsa@outlook.com](mailto:scocsa@outlook.com)  
Web : [www.scocsa.net](http://www.scocsa.net)  
Postal Address : C/- The Secretary  
PO Box 314,  
Oaklands Park, SA 5046  
Phone: 0479 162 527

### **Sunraysia Orchid Club**

Secretary: Diane Cavanagh  
Ph. (03) 5025 7305  
PO Box 1818, Mildura, Vic 3502

### **Whyalla Orchid Club**

Secretary: Brian Noble  
58 Ward Street, Whyalla, SA 5600

**The Orchid Club of South Australia Inc.**  
**Program for 2023**

**NEXT NIGHT MEETING**

**1<sup>st</sup> of June 8:00pm**

**Enfield Community Centre, 540 Regency Road, Enfield**

**DATE**

1<sup>st</sup> June

6<sup>th</sup> July

**PRESENTER**

Graham Hein

TBA

**TOPIC**

Laelia's my way

TBA

**DAY GROUP MEETING**

**9<sup>th</sup> June from 2pm - 4pm**

**Enfield Community Centre, 540 Regency Road, Enfield**

**DATE**

9<sup>th</sup> June

14<sup>th</sup> July

**PRESENTER**

Coralie Hills

Paul Dipuglia

**TOPIC**

Preparing plants for the  
showbench

Neutrog products

**DIARY DATES FOR THE 2023 SEASON**

8<sup>th</sup> July

23<sup>rd</sup> September

2<sup>nd</sup> – 10<sup>th</sup> September

4<sup>th</sup> November

Winter Show

Spring Show

Orchid Competition

Sarc Dinner

Klemzig Community Hall

Klemzig Community Hall

Royal Adelaide Show

Enfield Community Centre

**A Member of the Australian Orchid Council Inc.**



**Like The Orchid Club of South Australian on Facebook**

